

*@*a glance **Independent Living Centre NSW Display Apartment**

The Independent Living Centre NSW has built a complete and full sized one bedroom apartment, with home modifications in situ, into the new display at Blacktown. This apartment has been built to the National Livable Housing Design Guidelines, at the Platinum Level. The apartment displays various assistive technology and home modifications, some that are high tech and some that are simple and involve good design.

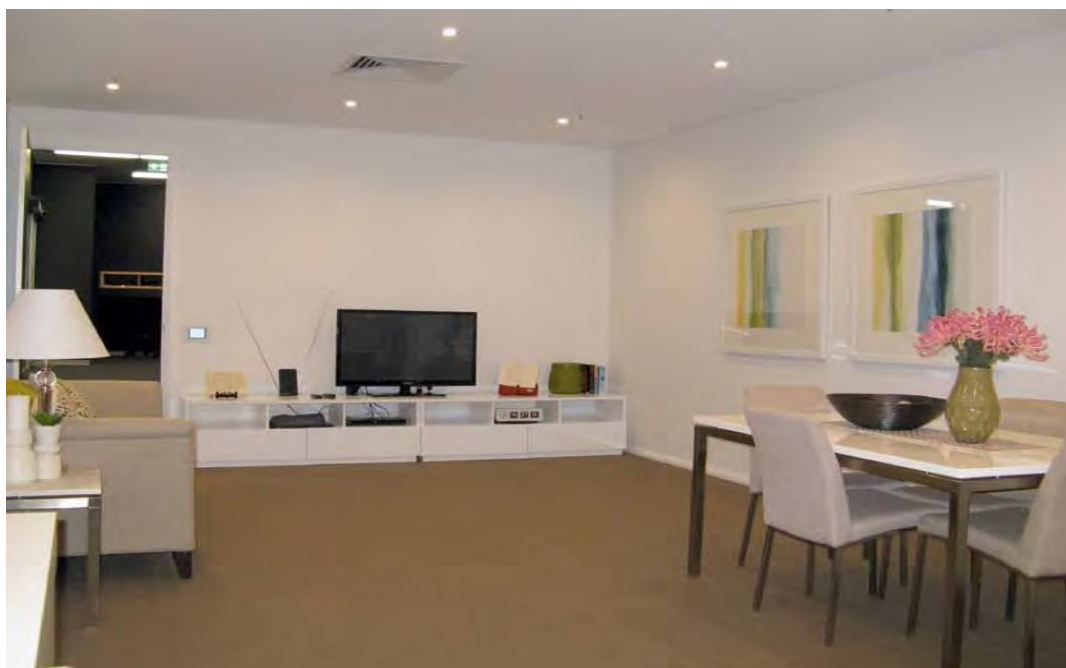
The ILCNSW would like to thank suppliers for their generosity in providing equipment to ILCNSW for the display:

Home Automation

The display apartment has been fitted with a Clipsal C-Bus home automation system enabling automatic and remote control of lights and, through the Wiser Home Control “plug in” system, appliances. We have added the Push Control system app to the C bus. This enables the C-bus functions including light and entertainment to be operated from an iPad or iPhone, remotely enabling the user to control their home environment from one single mobile access point. ILCNSW will continue to explore the capacity of high tech augmentative and alternative communication systems to operate the home automation system, as currently demonstrated through the DynaVox Maestro.

Bathroom

The combined bathroom and toilet explores a number of different assistive technology solutions and alternative to traditional home modified solutions, such as the Ifo toilet suite with armrest support system, the Pressalit Care position-adjustable wall-mounted shower chair and the Maxi Sky 600 ceiling lift with additional power feature. This is set within an area showcasing a number of integrated design elements for access and safety.



Independent Living Centre NSW

ABN: 44 103 681 572

Ceiling Hoists

Ceiling Hoists often require additional ceiling support structures during retrofit. Recently some hoists have come onto the market that do not require ceiling reinforcement and the ILCNSW is able to display two of these systems. They offer accessibility to all parts of the room, through an X-Y (H) track system, rather than being restricted to areas directly under fixed tracking.

Kitchen

The kitchen has been fitted with electric height-adjustable cupboards and bench tops. The white goods selected demonstrate accessible features and the joinery has been designed with suggestions to improve kitchen safety. Practical assistive technology equipment for eating, drinking and preparing meals is featured.

Bedroom

The bedroom includes accessible storage solutions through a pull down wardrobe rail and the overhead track hoist system found in the bedroom demonstrates a room to room connection point that is shared with the hallway. Ideas on ways to use the home automation system are demonstrated, using the bedroom switches. Assistive Technology for dressing, self-care, medication management and sleeping are some of the equipment on display.

The apartment provides many ideas about the possibilities people can apply for home living....



The Independent Living Centre NSW provides information on Assistive Technology; this includes information about suppliers. Our @Magic website provides access to our database of equipment and resources. Visit our website www.ilcnsw.asn.au to find out more about Assistive Technology and to search for products.

We provide information and advice; we do not sell or hire any products.

Our therapists welcome questions about all kinds of products and services.

Info-Line: 1300 885 886



Independent Living Centre NSW

Level 4, Shop 4019, 17 Patrick Street, Blacktown, NSW 2148

Reception: 02 9912 5800
Fax: 02 8814 9656
Email: help@ilcnsw.asn.au
Web: www.ilcnsw.asn.au

Disclaimer: The provision of this information does not constitute a recommendation. Responsibility for final selection of items rests with the individual.

Supported by



**Family &
Community Services**
Ageing, Disability & Home Care



home and community care

A JOINT COMMONWEALTH AND STATE/TERRITORY PROGRAM
PROVIDING FUNDING AND ASSISTANCE FOR AUSTRALIANS IN NEED